

Bicycle and Pedestrian Strategies



LEGEND

- MBTA Station
- MBTA Orange Line
- MBTA Commuter Rail
- Existing MBTA Bus Route

EXISTING **STRATEGY**

Repaint crosswalks and upgrade pedestrian infrastructure, including installing detectable warning panels and audible pedestrian push buttons and signals to increase pedestrian visibility and access

EXISTING **STRATEGY**

Implement the recommended alignment from the Spot Pond Brook Greenway Feasibility Study to extend the Greenway from Oak Grove Station to Malden Center and the Northern Strand Community Trail, closing an important gap in the City's bicycle infrastructure network

EXISTING **STRATEGY**

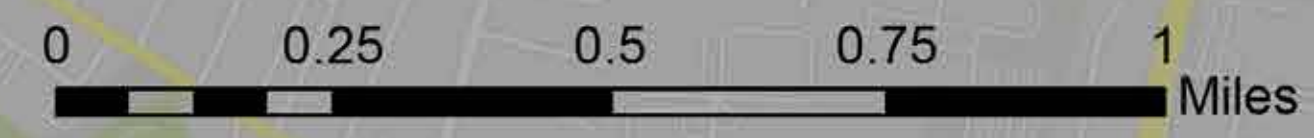
Work with the MBTA to install ADA compliant curb ramps with tactile warning panels and crosswalks connecting from the parking lot to the rear station entrance

EXISTING **STRATEGY**

Install bike lanes on both sides Commercial Street between Florence Street and Centre Street to connect existing bike lanes (Florence Street, Pleasant Street, Exchange Street, Centre Street) to Malden Center station; Identify opportunities to provide bicycle crossing infrastructure through intersections with Commercial Street, such as bike boxes, turn boxes, and bike signals

EXISTING **STRATEGY**

Install larger scale, covered, and secure bike parking, such as a bike cage or bike locker, at Linden Square to promote bicycle connections to transit, given the direct connection to the Northern Strand Community Trail



Strategies

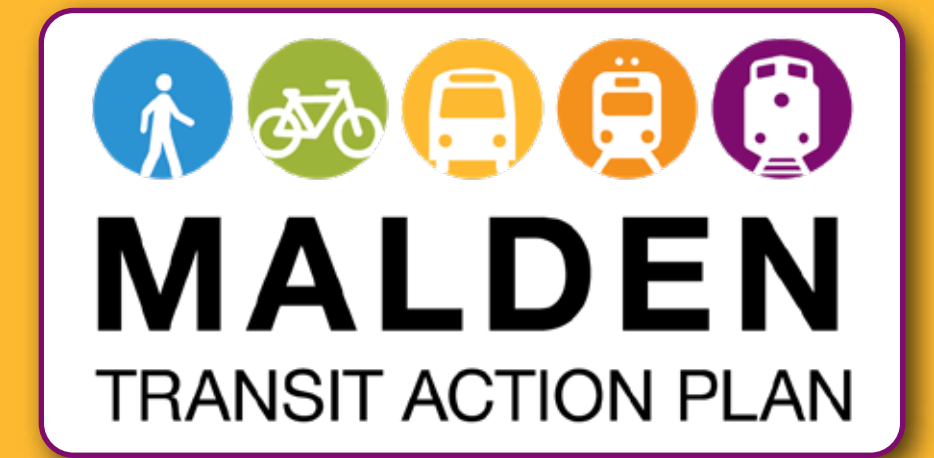
Bicycle and Pedestrian

Place your dots next to the strategies you support *most*



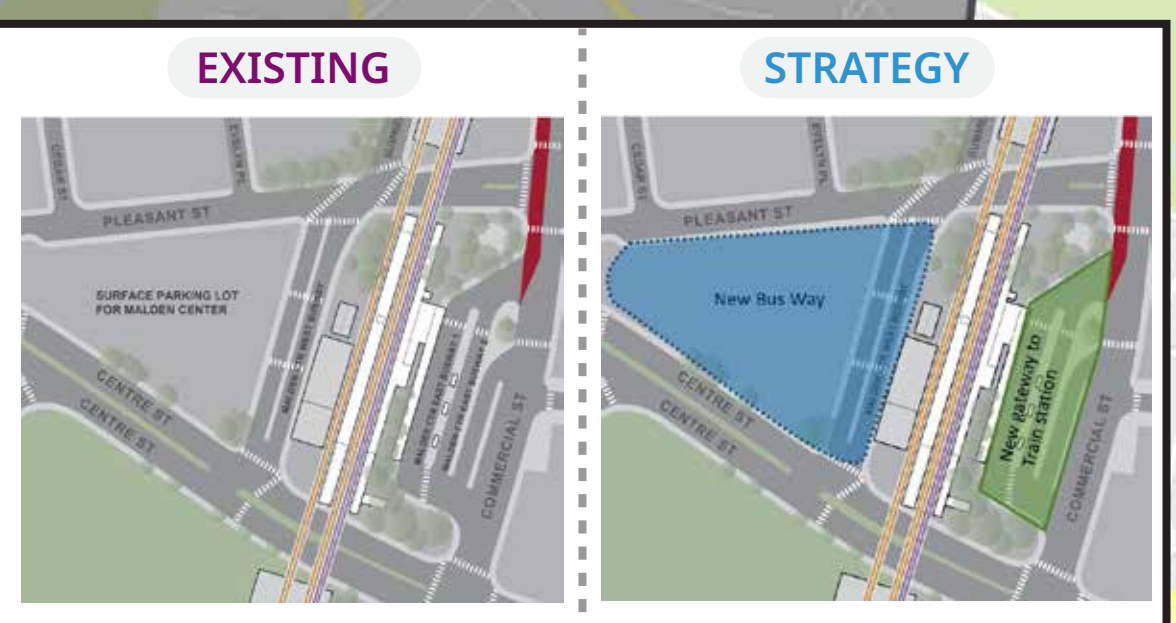
<p>A Implement the recommended alignment from the Spot Pond Brook Greenway Feasibility Study to extend the Greenway from Oak Grove Station to Malden Center and the Northern Strand Community Trail, closing an important gap in the City's bicycle infrastructure network.</p>	
<p>B Repaint crosswalks and upgrade pedestrian infrastructure at the intersection of Pleasant Street and Summer Street, including installing detectable warning panels and audible pedestrian push buttons and signals to increase pedestrian visibility and access.</p>	
<p>C Work with the MBTA to install ADA compliant curb ramps with tactile warning panels and crosswalks connecting from the parking lot to the rear Malden Center station entrance.</p>	
<p>D Install bike lanes on both sides Commercial Street between Florence Street and Centre Street to connect existing bike lanes (Florence Street, Pleasant Street, Exchange Street, Centre Street) to Malden Center station. Identify opportunities to provide bicycle crossing infrastructure through intersections with Commercial Street, such as bike boxes, turn boxes, and bike signals.</p>	
<p>E Install larger scale, covered, and secure bike parking, such as a bike cage or bike locker, at Linden Square to promote bicycle connections to transit, given the direct connection to the Northern Strand Community Trail.</p>	
<p>F Provide clear wayfinding signage from the Greenway along Banks Place to Oak Grove station entrances for both bicycles and pedestrians. Install a bike/ped crossing from the Spot Pond Brook Greenway to the southern entrance of station for a more direct connection to the Pedal & Park.</p>	
<p>G Keep the bridge between Banks Place and Fairlawn Street open 24/7, and add ADA accessibility improvements including ramps and tactile warning strips.</p>	
<p>H Evaluate the feasibility of: (1) extending the Fellsway bike lanes to connect with the Highland Avenue bike lanes, and (2) installing bike lanes along Glenwood Street and Washington Street to connect Fellsway/Highland Avenue bike lanes to Oak Grove station.</p>	
<p>I Reconfigure the intersection by removing the Winter Street slip lane, reducing crossing length and conflicts with vehicles. If bike facilities are installed along Glenwood Street and Washington Street, evaluate intersection treatments such as a bicycle box, bicycle signal, or protected intersection to facilitate bike access into Oak Grove Station.</p>	
<p>J Repaint the bus/bike lane on Commercial Street and develop plan for continued maintenance of pavement markings that aligns with existing City maintenance programs.</p>	
<p>K Work with the MBTA to implement clear, delineated access points for buses and bikes in the east and west busways at Malden Center station, providing better bicycle connections to the Pedal & Park and other bike parking.</p>	
<p>L Work with the MBTA to repave sidewalks within each busway at Malden Center station to provide a clear, level surface to meet ADA path of travel guidelines.</p>	
<p>M Re-paint existing bike lane on Commercial Street (south of Medford Street) and extend the bike lane to the Northern Strand Community Trail or directly to the Malden Center station.</p>	
<p>N Work with the MBTA to make the bus stop on Wesley Street accessible, which may require relocating the stop, as the sidewalk is blocked by utility poles.</p>	
<p>O Repaint crosswalks and update pedestrian infrastructure at the intersection of Lynn Street and Beach Street, including installing audible pedestrian push buttons and signals to improve pedestrian visibility and safety.</p>	
<p>P Work with the MBTA to install fencing with opportunities for public art and updated wayfinding signage that encourages non-parking individuals from walking through the Malden Center station parking lot, creating safer paths of travel between the parking lot and the station.</p>	
<p>CITYWIDE Explore opportunities to expand bike share service to improve first mile/last mile connections to transit. Malden is receiving three Bluebikes stations in Fall 2022 and another station in 2023, so expanding the system will be vital.</p>	
<p>CITYWIDE Complete a bicycle level of traffic stress (BLTS) analysis to identify high stress corridors that provide access to transit and evaluate the feasibility of implementing lower stress facilities such as buffered and separated bike lanes.</p>	
<p>CITYWIDE Complete a sidewalk inventory and ADA audit to prioritize sidewalks for capital improvements (repaving, curbing, etc.) on corridors that are served by transit. Performing a citywide sidewalk analysis was a recommendation from the City's April 2021 ADA Transition Plan.</p>	

Bus Operations Strategies

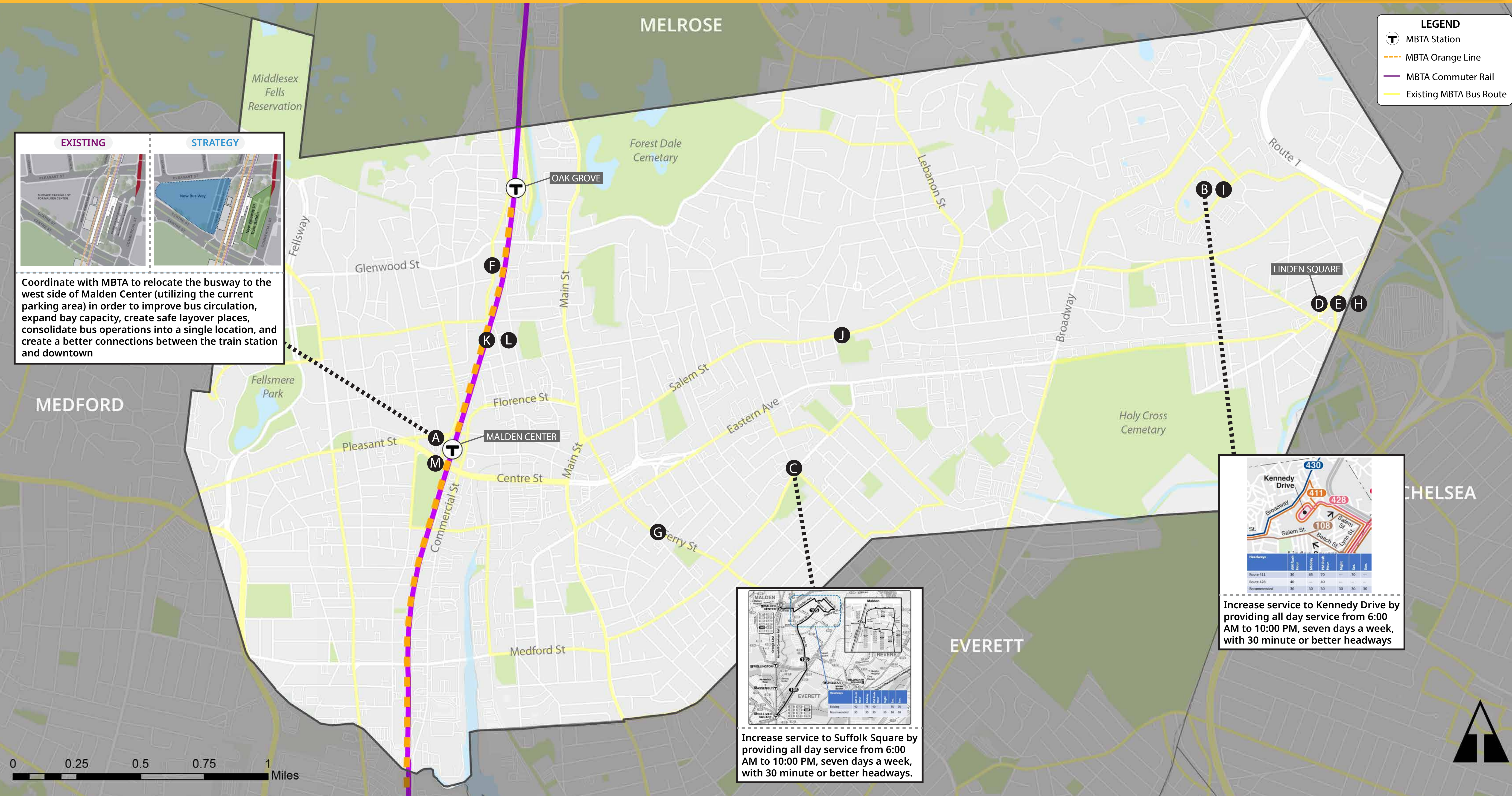


LEGEND

- MBTA Station
- MBTA Orange Line
- MBTA Commuter Rail
- Existing MBTA Bus Route



Coordinate with MBTA to relocate the busway to the west side of Malden Center (utilizing the current parking area) in order to improve bus circulation, expand bay capacity, create safe layover places, consolidate bus operations into a single location, and create a better connections between the train station and downtown

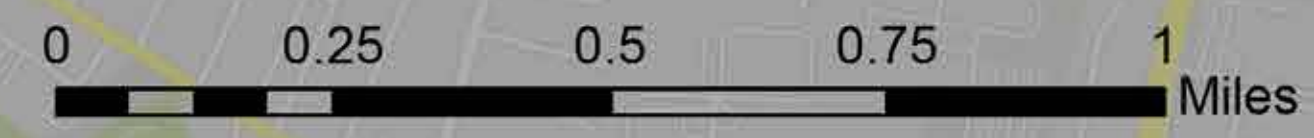


Headways	AM	PM	Weekend	Off-Peak	Peak	Off-Peak
Route 411	30	65	70	—	70	—
Route 428	40	—	40	—	—	—
Recommended	30	30	30	30	30	30

Increase service to Kennedy Drive by providing all day service from 6:00 AM to 10:00 PM, seven days a week, with 30 minute or better headways

Headways	AM	PM	Weekend	Off-Peak	Peak	Off-Peak
Route 415	30	65	70	—	70	—
Route 416	30	65	70	—	70	—
Route 417	30	65	70	—	70	—
Route 418	30	65	70	—	70	—
Route 419	30	65	70	—	70	—
Route 420	30	65	70	—	70	—
Route 421	30	65	70	—	70	—
Route 422	30	65	70	—	70	—
Route 423	30	65	70	—	70	—
Route 424	30	65	70	—	70	—
Route 425	30	65	70	—	70	—
Route 426	30	65	70	—	70	—
Route 427	30	65	70	—	70	—
Route 428	30	65	70	—	70	—
Route 429	30	65	70	—	70	—
Route 430	30	65	70	—	70	—
Recommended	30	30	30	30	30	30

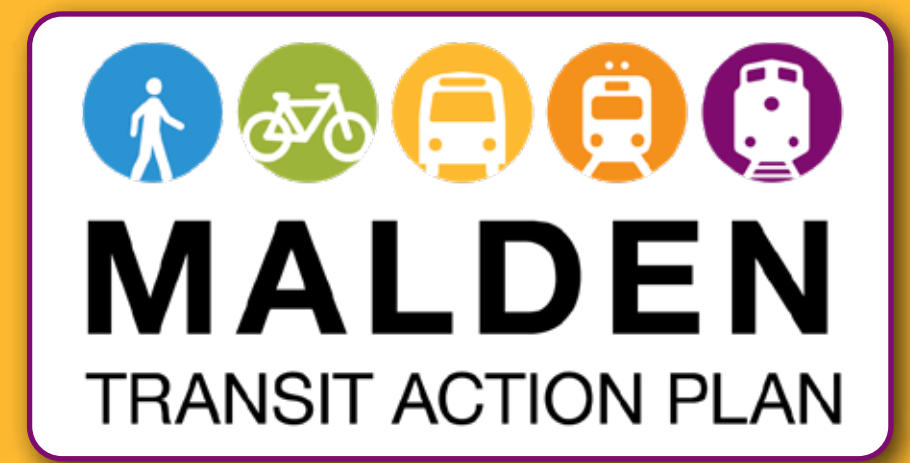
Increase service to Suffolk Square by providing all day service from 6:00 AM to 10:00 PM, seven days a week, with 30 minute or better headways.



Strategies

Bus Operations

Place your dots next to the strategies you support *most*



<p>A Coordinate with MBTA to relocate the busway to the west side of Malden Center (utilizing the current parking area) in order to improve bus circulation, expand bay capacity, create safe layover places, consolidate bus operations into a single location, and create better connections between the train station and downtown.</p>	
<p>B Increase service to Kennedy Drive by providing all day service from 6:00 AM to 10:00 PM, seven days a week, with 30 minute or better headways.</p>	
<p>C Increase service to Suffolk Square by providing all day service from 6:00 AM to 10:00 PM, seven days a week, with 30 minute or better headways.</p>	
<p>D Coordinate with MBTA to re-design the bus bay to reduce the curve using saw toothe bus bays which would improve stop access and egress.</p>	
<p>E Adjust road geometry to improve the angle of approach.</p>	
<p>F Do not deviate into Oak Grove on either the 131 or 137.</p>	
<p>G Create high frequency service on Ferry St from 6 AM to 10 PM.</p>	
<p>H Reroute the 108 to directly serve Linden Square via Salem St. to Beach St. and eliminate the eastern end loop.</p>	
<p>I Increase service to Kennedy Drive by providing all day service from 6:00 AM to 10:00 PM, seven days a week with 30-minute or better headways.</p>	
<p>J Service on Salem St. should be staggered to prevent bus bunching and create a high frequency corridor.</p>	
<p>K Extend service on the Orange Line to 1:30, so that it aligns with the other subway routes.</p>	
<p>L Improve frequency on the weekends.</p>	
<p>M Increase the station cleaning schedule and identify additional opportunities to improve lighting.</p>	
<p>Improve mid-day headways. Operate 30 minute or better service all day on all local routes.</p>	
<p>Create a one-seat ride from Malden to Cambridge/Somerville.</p>	
<p>Improve frequencies and spans on weekends so that routes are at a minimum meeting the MBTA standards and guidelines.</p>	
<p>Add e-ink signage that provides real-time information at high usage stops and at low usage stops information promoting where to find real-time information for routes on the MBTA website.</p>	
<p>Improve weekday frequency on the Route 108 to match that of the 109 and on weekends operate 30 minute headways.</p>	
<p>Improve weekday frequency on the Route 106 to match that of the 100 and on weekends operate 30 minute headways.</p>	
<p>More direct bus service between key destinations that is faster and has less deviations.</p>	

CITYWIDE

Strategies

Infrastructure; Traffic & Safety;
Wayfinding & Bus Stop Amenities



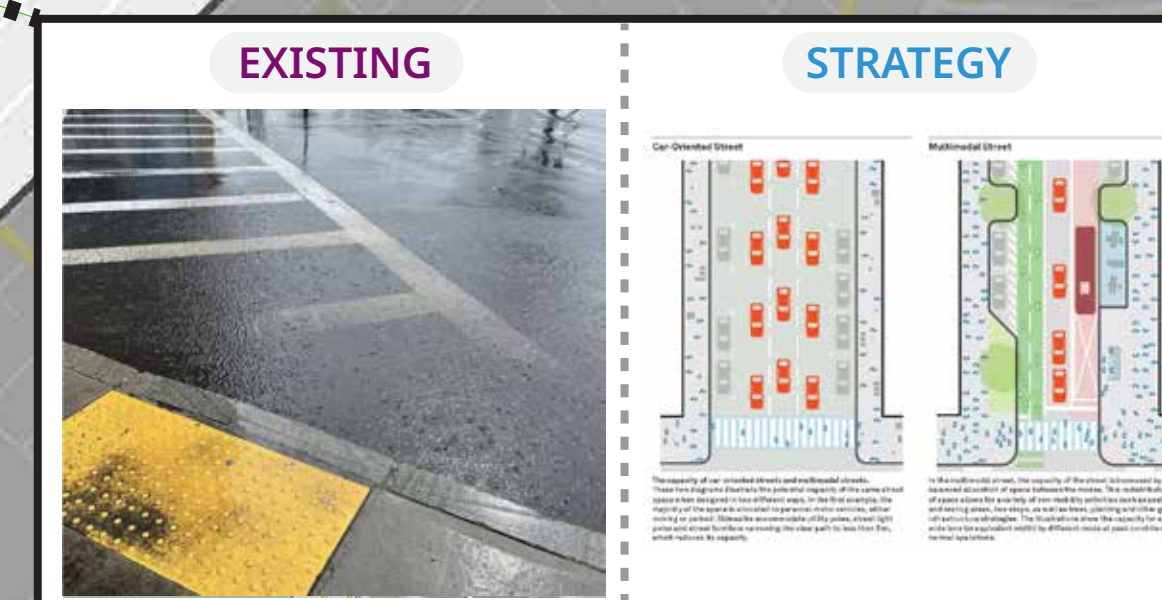
Install signage directing individuals from Winter Street to the Oak Grove station entrance, encouraging people to enter on the west side.



Add a queue jump at the intersection of Main and Pleasant to give buses priority by allowing them to pull out in front of traffic when exiting the stop.



Use bus priority treatments, such as transit signal priority and/or bumpouts at bus stops, on Salem Street from Main Street to Lebanon Street.



Consider full reconstruction of Centre Street to improve drainage and create a more multimodal corridor.

LEGEND

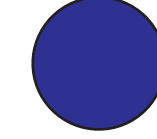
- MBTA Station
- MBTA Orange Line
- MBTA Commuter Rail
- Existing MBTA Bus Route



Strategies

Infrastructure; Traffic & Safety;
Wayfinding & Bus Stop Amenities

Place your dots next to the strategies you support *most*



INFRASTRUCTURE

<p>A Consider full reconstruction of Centre Street to improve drainage and create a more multimodal corridor.</p>	
<p>B Make structural improvements that bring the platform to a state-of-good-repair.</p>	
<p>C Maintain bus only lanes in both direction along Center Street from Malden Center to Main St.</p>	
<p>D Coordinate with MBTA to relocate the bus way to the west side of Malden Center (utilizing the current parking area) in order to improve bus circulation, expand bay capacity, create safe layover places, consolidate bus operations into a single location, and create a better connections between the train station and downtown.</p>	
<p>CITYWIDE Coordinate with the MBTA whenever the city is doing a roadway improvement project where buses run on it. Seek potentials for upgrades and ADA compliance. Upgrades could be benches, shelters, bike racks, digital signage etc. where warranted. Additionally, require developers to coordinate with the MBTA and include bus stop amenities where appropriate with access improvements.</p>	
<p>Use pavement markings to delineate bus stop locations, in conjunction with no, parking signs.</p>	
<p>Improve pedestrian infrastructure (sidewalks, curb ramps, crosswalks) at identified locations through integration with existing roadway projects and City initiatives.</p>	

TRAFFIC & SAFETY

<p>E Add a queue jump at the intersection of Main and Pleasant to give buses priority by allowing them to pull out in front of traffic when exiting the stop.</p>	
<p>F Use bus priority treatments, such as transit signal priority and/or bumpouts at bus stops, on Salem Street from Main Street to Lebanon Street.</p>	
<p>G Review options for making the physical crosswalk more safe..</p>	
<p>H Consider additional traffic calming devices including an elevated crosswalk (@ the RRFB on Lynn and Wesley Street).</p>	
<p>I Consider installing additional traffic calming measures including a elevated crosswalk (@ Beech Street and Northern Strand Community Trail).</p>	

WAYFINDING & BUS STOP AMENITIES

<p>J Install signage directing individuals from Winter Street to the Oak Grove station entrance, encouraging people to enter on the west side.</p>	
<p>K Install bus signage that clearly communicates which routes stop where, consider adding e-ink signage that provides real-time information.</p>	
<p>L Update information to include current bus routes. Consider installing accessible, e-ink signage that provides real-time information on bus arrivals and departures that is visible when waiting at the busway.</p>	
<p>M Replace the bus stop sign and relocate away from the curb. New signage could include e-ink technology that provides real-time information.</p>	
<p>N Develop branded wayfinding signage for pedestrians and bicyclists to points within Malden Center Station, as well as to nearby destinations from station with distance/time by walking/biking from given location.</p>	
<p>CITYWIDE Conduct and audit of lighting at bus stops and add solar power lighting where lighting is inadequate.</p>	
<p>Conduct an analysis to determine which stops should be consolidated and do not meet the MBTA's spacing guidelines.</p>	
<p>Install seating at stops which meet the MBTA thresholds of 50 or more boardings daily and there is sufficient space to add seating and still meet ADA accessibility requirements.</p>	
<p>Install shelters where stops meet the MBTA ridership thresholds and there is sufficient space to comply with ADA accessibility requirements</p>	